

Antony Group of Companies



Towards a clean environment

**Helping Cement Companies to meet their
AFR Targets**

Indian cities generate about 68.8 Million tonnes of MSW annually, of which 13.7 Million tonnes is available for co-processing

MSW based RDF is an excellent substitute to coal, which can be cheaper and that too “cleaner fuel”

30% cost-efficient AF option

RDF can be made available round the year

Adoption of AFR in Cement Industries


TSR (%)



Thermal Substitution Rate (TSR) in India is estimated to be 5%

In Western Europe, countries like Austria, Germany, UK have 60%+ TSR

Even emerging economies like Philippines and Brazil have ~20% TSR



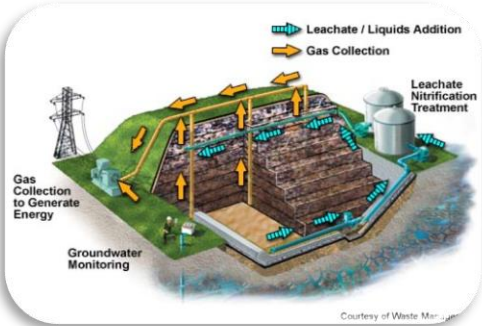
And this is where, **Antony Group is committed to help cement industry increase TSR and meet Indian Government's target of 30% TSR by 2030**

Antony Waste...



Towards a clean environment

India's only Publicly listed System Integrator and Services Company



SMART WASTE COLLECTION SYSTEMS

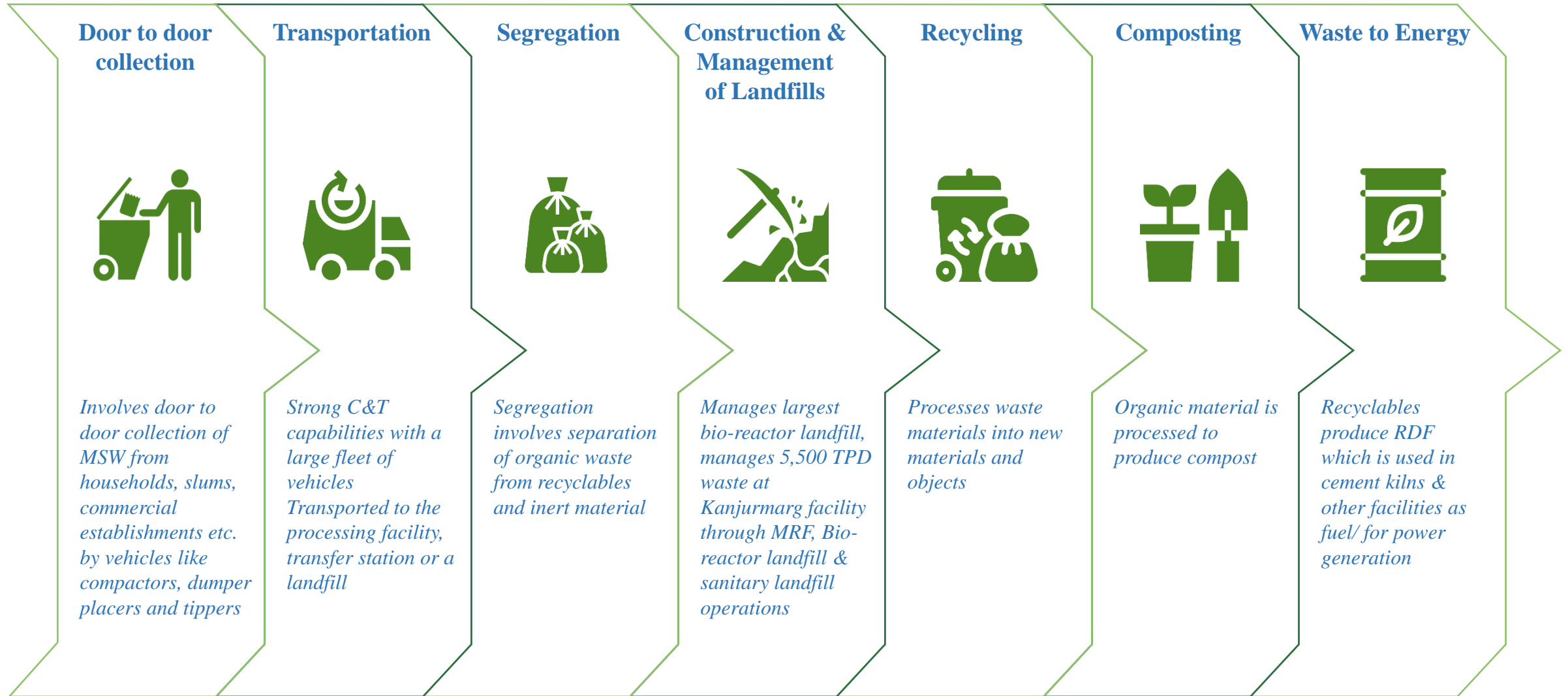
BIOMINING SYSTEMS

WASTE PROCESSING SYSTEMS

WASTE DISPOSAL SOLUTIONS

MECHANIZED POWER SWEEPING

End-to-end Waste Management Services



C&T Projects in Hand



North Delhi Municipal Corporation



GNOIDA



NOIDA



Varanasi Municipal Corporation



Jhansi Municipal Corporation



Pimpri Chinchwad Municipal Corporation



Municipal Corporation of Greater Mumbai



Navi Mumbai Municipal Corporation



Thane Municipal Corporation



Mangalore Municipal Corporation



Our Waste Processing Facilities



Mumbai Municipal Corporation

Bioreactor Landfill Processing – 5000 – 6000 TPD
Material Recovery Facility – 1000 TPD
Composting Process – 1000 TPD
Biomining of Bioreactor landfill – 4000 TPD



Pimpri Chinchwad Municipal Corporation

Material Recovery Facility – 1000 TPD
Composting – 700 TPD
Waste to Energy – 14 Mw Proposed – Under Construction



Greater Noida Industrial Development Authority

Greater NOIDA Authority

Biomining, Processing and Disposal of Legacy waste of 2 Lakh MT in 2 years

PCMC 14MW Waste to Energy Project
Actual Site Photos



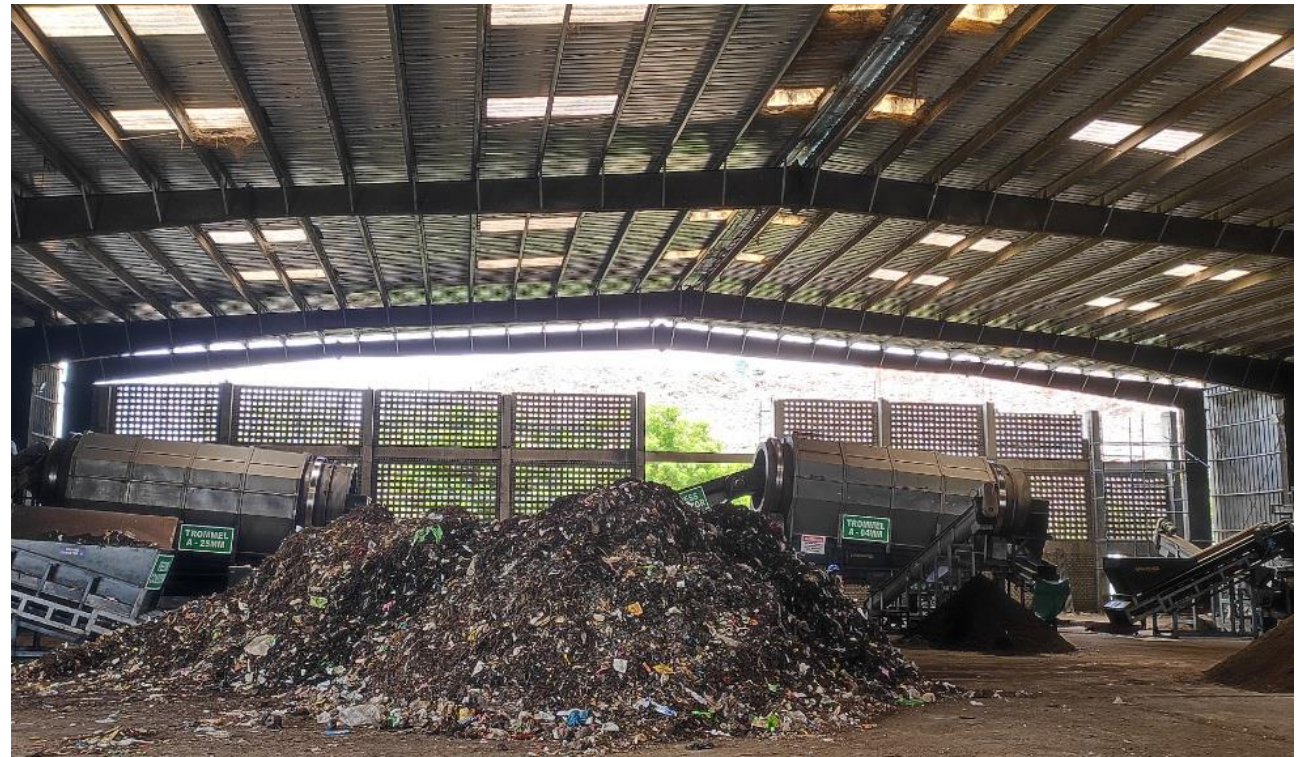
PCMC 1000TPD Material Recovery Facility (MRF)





PCMC
1000TPD Material
Recovery Facility

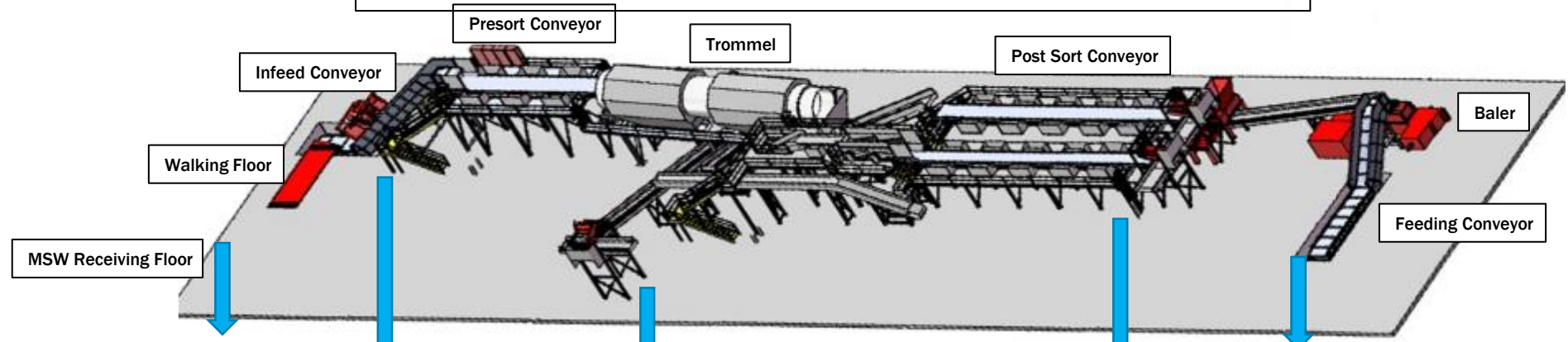
PCMC 40TPD Composting
Facility



Bioreactor Landfill Technology - Kanjurmarg



MATERIAL RECOVERY FACILITY



Dry Waste Processing



Refuse Derived Fuel (RDF)

Parameters:

Size 80 to 100mm

Moisture <30%

Chloride <1.5%

Sulphur <1.5%

GCV ~ 4500kcal



Windrow Processing of MRF Recovered Organics



Wet Waste Processing (Compost Plant)

COMPOST PLANT



WINDROW IRRIGATION

WINDROW TURNING

TEMPERATURE MEASUREMENT

NEGATIVE & POSITIVE AERATION

OUTPUTS

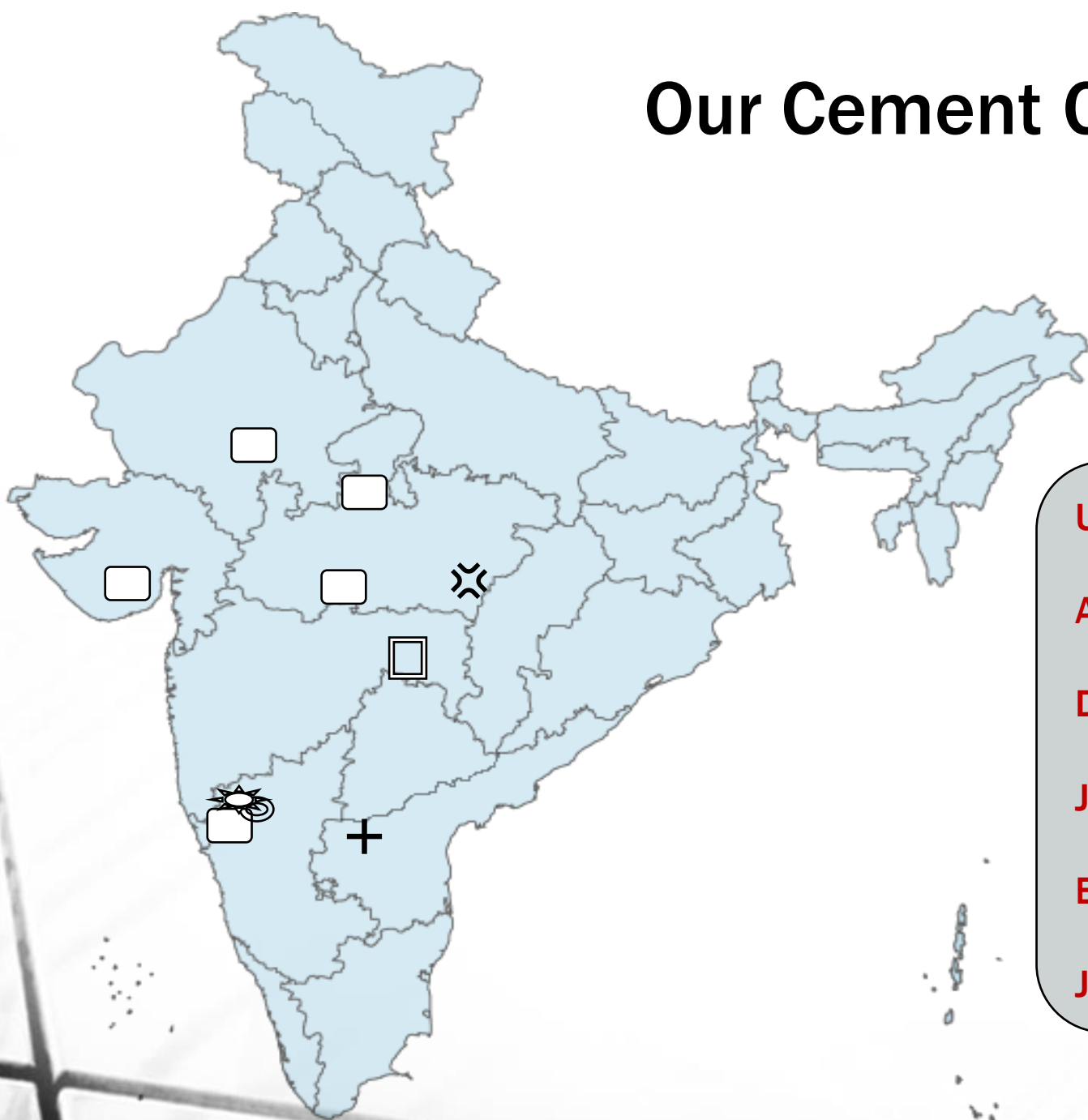


Palletization



Antony Group is in advanced stage of trial runs with several cement companies...

Our Cement Clientele



UltraTech	
Adani	
Dalmia	
JK Cement	
Birla Corporation	
JSW	

To Summarize...

- ❑ **Willing to enter into multi-year contract**
- ❑ **Can supply RDF meeting size (50mm – 80 mm) and moisture requirement (25%-35% during non-monsoon season)**
- ❑ **Guaranteed availability of requisite specifications**
- ❑ **Willing to set-up and operate shredding facility at your plant**
- ❑ **Open to flexible product pricing based on RDF's calorific value**

*Thank
you*

